



# **Fleet** Outlook<sup>®</sup>

## **8.4 Release Notes**

---

## 8.4 FEATURE SET

The FleetOutlook 8.4 Release Notes outline the new and enhanced features available in the release. Depending on your user profile, you may not have the appropriate permissions to access all of the available features. To download the comprehensive FleetOutlook and FleetOutlook Admin User Guides, log into FleetOutlook, click the Help link, and then click the Document Library icon.

<b>Vehicle Bus Tab – Enhanced .....</b>	<b>2</b>
<b>Automatic Jbus VIN Association.....</b>	<b>3</b>
<b>Expanded Construction JBus Data.....</b>	<b>4</b>
<b>Fixed Asset Low Battery Alert.....</b>	<b>5</b>
<b>Asset Battery Level Display.....</b>	<b>5</b>
<b>Device Power Source Change – New Alert.....</b>	<b>6</b>
<b>Breadcrumb Detail – Power Events.....</b>	<b>6</b>
<b>International Landmark Address Support.....</b>	<b>7</b>
<b>Trip Report – Map View Capability .....</b>	<b>8</b>
<b>Expanded Device Portfolio – A Look Ahead.....</b>	<b>9</b>
<b>Technical Support .....</b>	<b>10</b>

## VEHICLE BUS TAB – ENHANCED

The enhanced Vehicle Bus tab enables fleet managers to choose on a vehicle-by-vehicle basis whether to use parameters reported from the vehicle bus or data derived from the device. In previous versions of FleetOutlook, the Vehicle Bus tab was labeled the OBD-II tab. It displayed a true/false, read-only view of which OBD-II parameters the vehicle reported from the vehicle bus. Now, this enhanced and interactive tab displays the Vehicle Bus Type reported, OBD-II or Jbus, and the Protocol ID. Plus, you now can select whether to use data reported from the vehicle bus or data derived from the device.

Vehicle Bus Type		OBD-II
Protocol ID		6-CAN 11 bit
	Readable From Bus	Use Bus Value
Reports VIN	true	<input checked="" type="checkbox"/>
Reports Vehicle Speed	true	<input checked="" type="checkbox"/>
Reports Vehicle Odometer	false	<input type="checkbox"/>
Reports Fuel Consumption	true	<input checked="" type="checkbox"/>

Check the Bus parameters that you want to take precedence over the GPS-derived values throughout FleetOutlook and reports.

## AUTOMATIC JBUS VIN ASSOCIATION

For devices capable of reporting Jbus VINs, FleetOutlook now provides a more effective and efficient solution for deploying your equipment and heavy-duty vehicles. FleetOutlook's new Automatic Jbus VIN Association supports automatic pairing of a recently installed device to its matching VIN within FleetOutlook. This eliminates the manual process of pairing Jbus-capable devices to vehicles in FleetOutlook.

**Note:** To enable Automatic Jbus VIN Association, contact CalAmp's Technical Support team by phone 1-866-456-7522 or by email: [solutionsupport@calamp.com](mailto:solutionsupport@calamp.com).

There are two methods for employing Automatic Jbus VIN Association:

When a Jbus-capable device reports a VIN that matches an existing VIN in FleetOutlook, it will automatically pair the device to the known vehicle VIN. The vehicle is now tracking in FleetOutlook. To make best use of this method, it is important to create a new vehicle in FleetOutlook and populate its VIN field. In this way, the reported VIN by the device will be matched to the existing VIN in the vehicle settings.

When a Jbus-capable device reports a VIN and cannot find an exact match in FleetOutlook, a new vehicle will be created with the VIN as the Vehicle Name and Vehicle ID. FleetOutlook automatically pairs the device with this new vehicle.

The screenshot shows the 'Edit Vehicle' window with the following details:

- Vehicle ID:** 1M8G2MB00P040103
- Vehicle Name:** 1M8G2MB00P040103
- Driver:** OB\_2620\_3585\_Key2B
- Device:** MIN:464123456 ESN:464123456
- Vehicle Icon:** [Icon of a vehicle]
- Vehicle Status:** Active
- Vehicle Category:** Auto Provision
- Last modified:** mgp@calamp.com 15-Feb-2016 10:52:39 AM EDT
- Created:** Auto Provision 27-Oct-2015 01:11:08 PM EDT
- Save** button

Vehicle created and paired w/ device by Automatic VIN Association

## EXPANDED CONSTRUCTION JBUS DATA

FleetOutlook 8.4 includes an expanded list of Jbus parameters reported, including construction-based health reports with minimum, maximum and average equipment characteristics; engine torque and throttle position percentages; and daily hydraulic data. FleetOutlook's Vehicle Maintenance module includes access to this extended set of hourly and daily messages. This snapshot of under-the-hood information provides fleet managers with a vehicle's current condition, enabling potential maintenance and safety issues to be identified and corrected before becoming costly.

Dashboard   Update Vehicles   Setup Schedules   DTC Codes   J1939 Diagnostic Codes   J1708 Diagnostic Codes

Vehicle: QA 3585 ( Schedule: ElkrIDGE Inspection )

Vehicle Category: [All] ▼

Vehicle Name: QA 3585 ▼ [Vehicle Bus](#)

The Vehicle Bus link is available on the Update Vehicles screen for vehicles reporting J-bus data. This link will only display if the selected vehicle is equipped with a device that reports Jbus data. When clicked, the Vehicle Bus Information screen opens and displays the latest values reported.

Vehicle Bus Information: QA 3585

 This list contains all the most recent values from J-BUS/OBD-II equipped vehicles.

Vehicle Bus Type	JBus
Protocol ID	6-CAN 11 bit
Readable From Bus	Use Bus Value?
Reports VIN	true <input checked="" type="checkbox"/>
Reports Vehicle Speed	true <input checked="" type="checkbox"/>
Reports Vehicle Odometer	true <input checked="" type="checkbox"/>
Reports Fuel Consumption	true <input checked="" type="checkbox"/>

Property	Value
Min DEF Temperature	32°F
Max DEF Temperature	32°F
Avg DEF Temperature	32°F
Min Engine Oil Pressure	148 (kPa)
Max Engine Oil Pressure	148 (kPa)
Avg Engine Oil Pressure	148 (kPa)
Min Engine Oil Temperature	32°F

Last updated: 15-Feb-2016 09:52:39 AM EST [Close](#)

## FIXED ASSET LOW BATTERY ALERT

With the 8.4 release, FleetOutlook offers improved fixed asset monitoring. Knowing the status and location of your fixed assets is essential to protecting the loss of your equipment. If a device stops communicating, you are in the dark. Now, you can configure the Vehicle Status alert to monitor TTU-720 battery voltage levels. Receive an email or text message when a device reports battery voltage below 5% of capacity.

Group: \* WRXMA Enterprise Group Choose

Alert Name: \* Asset - Battery Low

Alert Type: \* Vehicle Status

Device: \* All Devices

Message Type: \* Battery Level Low

☒ Alert on each occurrence of the event

☐ Alert only if more than 1 occurrences of the event in 1 minutes

Configure one or more alert notification methods ...

Email FleetOutlook Text Msg Report Only

☒ Enable Email Alerts

Email Body To Cc Bcc

Email Subject: \* jdoe@calamp.com

Email Text: \* Device battery low.

Email Filter: (None)

Add & Activate Add

Monitor a single asset or all assets in a selected group.

Configure to monitor low battery voltage.

## ASSET BATTERY LEVEL DISPLAY

The Asset Summary tab displays a list of your fixed assets equipped with TTU-720 devices, their reported locations and the amount of time at those locations. With the addition of the new Battery Level column, this tab provides fleet managers with field reliability for monitoring equipment deployed for long periods.

Map

Vehicle Summary

Asset Summary

Breadcrumb Detail

Asset Summary: QARWD Enterprise Group

	Name	Asset ID	Status	Latest Event	Location	Event Time	Time at Location	Battery Level
<input type="checkbox"/>	RA7 115	RA7-0115		Power Up	13645 Dulles Tech Sunrise Valley Dr Herndon VA 20171	02/15/2016 09:...	6d 21hr 49min	96%
<input type="checkbox"/>	6152-TTU07G	6152-TTU07G		Position	[2248 Longview Dr Triple Oak Ct / Sag Roseville CA 95747	04/22/2015 09:...	328d 22hr 14min	75%
<input type="checkbox"/>	ATU 620	ATU-620		Power Up	[13655 Dulles Tech River Birch Rd Herndon VA 20171	10/01/2014 01:...	538d 15hr 41min	54%

New Battery Level column displays the last received battery level for device as a whole number percentage.

## DEVICE POWER SOURCE CHANGE – NEW ALERT

The Device Power Source Change alert provides real-time notification when a device reports a power source change. Get immediate knowledge via email or text message when a device switches from external power to its battery, and then when it switches back again. The alert contents include the device, paired vehicle, location and time stamp.

Group: \* Fairfax Choose

Alert Name: \* Device Battery Power

Alert Type: \* Device Power Source Change

Vehicle Category: (None)

Message Type: \* Switched to Battery Power

Any Power Source Change

Switched to Battery Power

Connected to External Power

Configure one or more alert notification methods ...

Email FleetOutlook Text Msg Report Only

☒ Enable Email Alerts

Email Body To Cc Bcc

Email Subject: \* jdoe@calamp.com

Email Text: \* Device is on its own battery.

Email Filter: (None)

Add & Activate Add

Configure one alert to monitor when a device switches to internal battery power, and then configure a second alert to monitor when a device switches to external battery power.

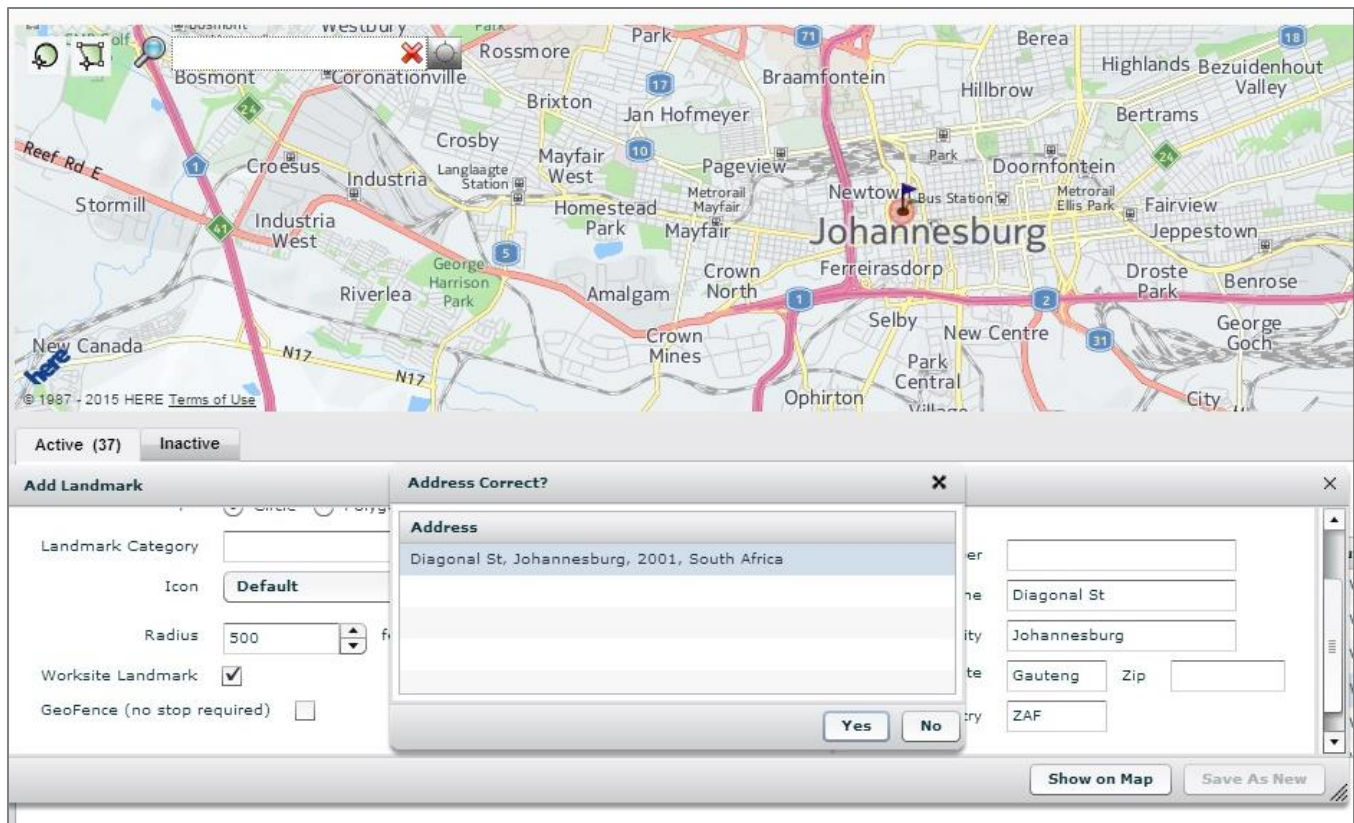
## BREADCRUMB DETAIL – POWER EVENTS

FleetOutlook's Breadcrumb Detail displays tracking details for a specific vehicle on a specific day as far back as 90 days. For devices with an internal battery, the Breadcrumb Detail displays a Battery Power event when a device switches from vehicle battery to its internal battery and a Vehicle Power On event when a device switches from its internal battery to vehicle power.

03:10 PM EDT		Battery Power	[34447 Nylander Ter Fremont CA 94555] Vincent	1,194 mi	
05:12 PM EDT		Vehicle Power On	Forest Hills Com / Nylander Ter Fremont CA 94555 --	1,194 mi	

## INTERNATIONAL LANDMARK ADDRESS SUPPORT

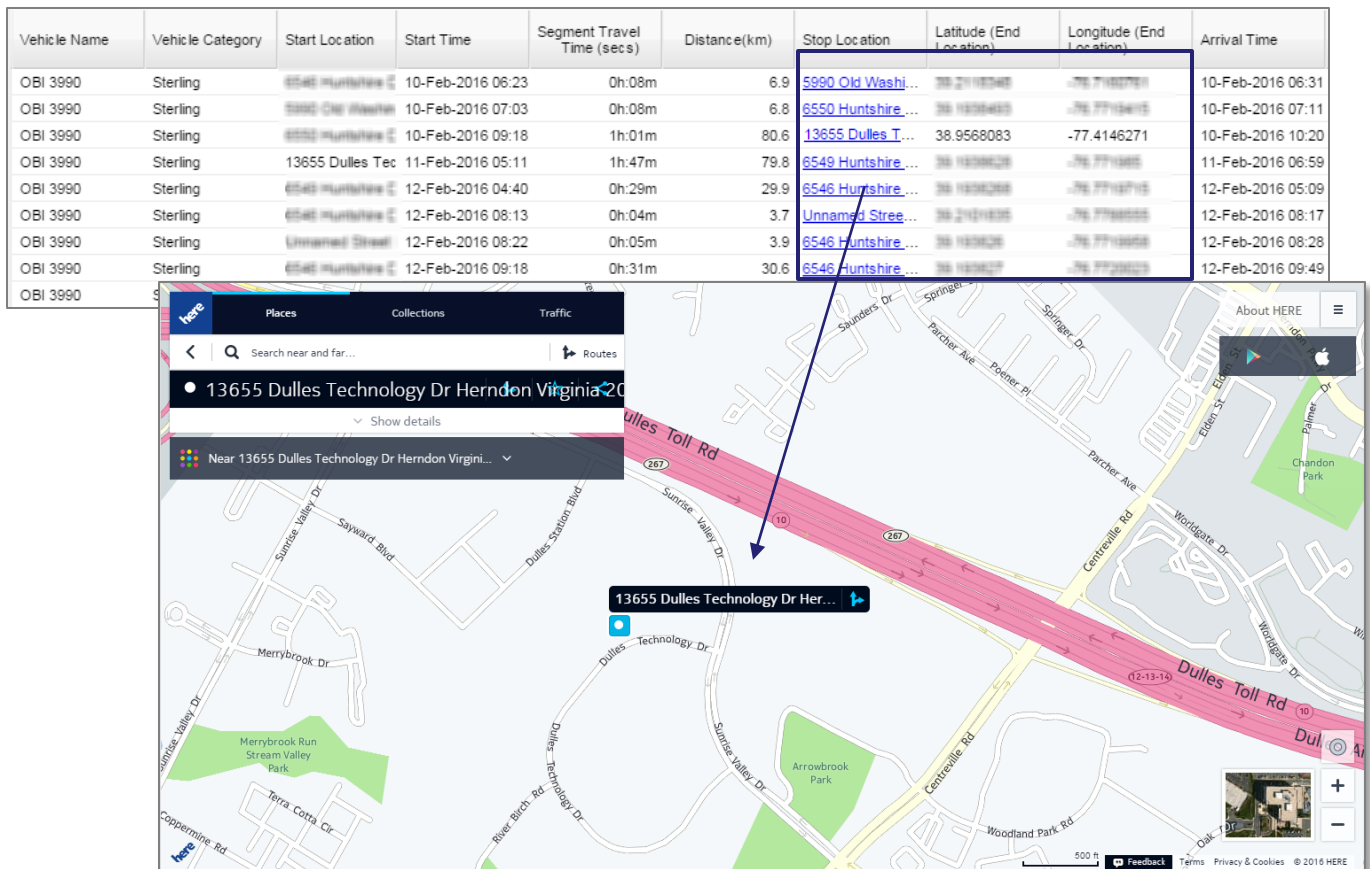
FleetOutlook Landmarks now support addresses outside of Canada and the United States. The new Country field enables you to define and verify international locations of interest or service zones using FleetOutlook's standard circle, polygon or place name properties.





## TRIP REPORT – MAP VIEW CAPABILITY

The Trip Report now contains drill-to-map view capability for each trip's stop location and two new end location columns: Latitude and Longitude. This report provides a segmented view of a driver's day, highlighting each major leg. Each leg ends with a stop location, typically a driver's next scheduled work site. The new drill-to-map functionality opens the stop location in a new interactive map view, pinned to the stop location's latitude and longitude coordinates. The map includes the same features and functionality of FleetOutlook's tracking maps, including map and satellite imagery, zoom controls and unlimited panning. Fleet Supervisors can use the map to see if an unknown stop location is within the proximity of a scheduled work site.



---

## EXPANDED DEVICE PORTFOLIO – A LOOK AHEAD

FleetOutlook's device portfolio is expanding to include new devices that provide greater field reliability for managing assets and vehicles, including connected service vehicles, construction equipment, heavy machinery and warehouse machines.

To learn more about these various devices and check availability in your region and on your chosen carrier, contact your sales rep by phone at 703.262.4040 or by email at [fleetoutlooksales@calamp.com](mailto:fleetoutlooksales@calamp.com).



### LMU-4230 – COMING SOON

The LMU-4230 has the features, expandability, and flexibility with the intelligence to meet customers' ever-changing needs in fleet management. The LMU-4230 supports a broad range of wireless connection options and comes equipped with either light or heavy duty vehicle interfaces. The LMU-4230's expandability and flexibility are key to lowering the cost of delivering, supporting, and growing fleet management solution.



### LMU-4520 – COMING SOON

The LMU-4520 is a fully weatherproof, dual-mode, location-and-messaging device for construction markets that features both satellite and cellular communications as well as connection to the vehicles ECU. It offers a full set of fleet management features, along with an IP67 environmental rating



### LMU-5530 MOBILE ROUTER – COMING IN 2016

The LMU-5530 Mobile Router offers an all-in-one mobile communications solution for industrial, utility, transportation and enterprise customers. It offers a full set of fleet management features, with high-speed, secure LTE broadband wireless connectivity in a rugged industrial design, with optional Wi-Fi and high-precision GPS for mobile applications.

---

## TECHNICAL SUPPORT

### SUPPORTING YOUR SOLUTION EVERY TIME. ALL THE TIME.

CalAmp does more than provide you with application services – we also supply you with an always-available resource for attention, answers and insights if you have questions about your solution.

CalAmp's Technical Support team stands beside you to ensure any concerns you have with any element of your solution – application, hardware or operations – are addressed quickly and completely.

There are two ways to contact the Technical Support Team:

Phone:	866.456.7522
Support Email:	<a href="mailto:solutionsupport@calamp.com">solutionsupport@calamp.com</a>