

Package Contents

If you ordered Integra-TR part number:

- 2424018450 VHF 136-162 MHz Integra-TR, 12.5/25.0 k Dual Band IF
- 2424018451 VHF 136-162 MHz Integra-TR, 6.25/12.5 k Dual Band IF
- 2424018450F VHF 136-162 MHz Integra-TR, 12.5/25.0 k Dual Band IF with Fan
- 2424018451F VHF 136-162 MHz Integra-TR, 6.25/12.5 k Dual Band IF with Fan

- 2424018550 VHF 148-174 MHz Integra-TR, 12.5/25.0 k Dual Band IF
- 2424018551 VHF 148-174 MHz Integra-TR, 6.25/12.5 k Dual Band IF
- 2424018550F VHF 148-174 MHz Integra-TR, 12.5/25.0 k Dual Band IF with Fan
- 2424018551F VHF 148-174 MHz Integra-TR, 6.25/12.5 k Dual Band IF with Fan

- 2424048350 UHF 406.1-440 MHz Integra-TR, 12.5/25.0 k Dual Band IF
- 2424048351 UHF 406.1-440 MHz Integra-TR, 6.25/12.5 k Dual Band IF
- 2424048350F UHF 406.1-440 MHz Integra-TR, 12.5/25.0 k Dual Band IF with Fan
- 2424048351F UHF 406.1-440 MHz Integra-TR, 6.25/12.5 k Dual Band IF with Fan

- 2424048550 UHF 440-476 MHz Integra-TR, 12.5/25.0 k Dual Band IF
- 2424048551 UHF 440-476 MHz Integra-TR, 6.25/12.5 k Dual Band IF
- 2424048550F UHF 440-476 MHz Integra-TR, 12.5/25.0 k Dual Band IF with Fan
- 2424048551F UHF 440-476 MHz Integra-TR, 6.25/12.5 k Dual Band IF with Fan

Your package contains:

- (1) Integra-TR Serial Modem
- (1) Power Cable
- (1) Quick Start Guide

- Integra-TR Serial Modem

- Power Cable

- Quick Start Guide



Quick Start Guide

Integra-TR

SERIAL RADIO MODEM

CalAmp®



This quick start guide covers programming software installation and basic modem setup. For advanced configuration please refer to the user manual.



Air Superiority™

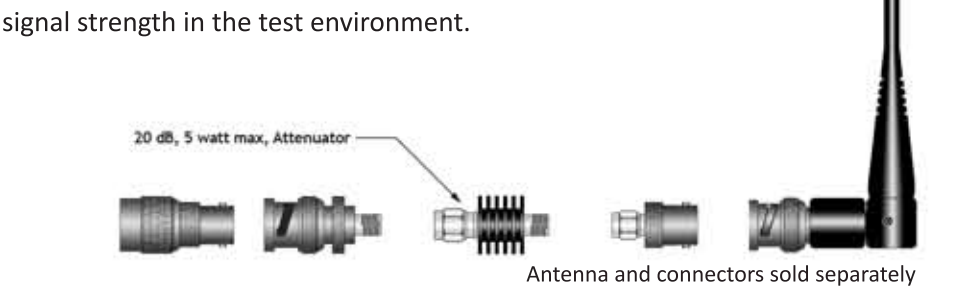
© 2012 CalAmp.  
PN: 004-4008-002 Rev 3  
All specifications are typical and  
subject to change without notice.



CalAmp Wireless Networks  
299 Johnson Ave, Suite 110  
Waseca, MN 56093  
t: 507.833.8819 | f: 507.833.6748  
www.calamp.com

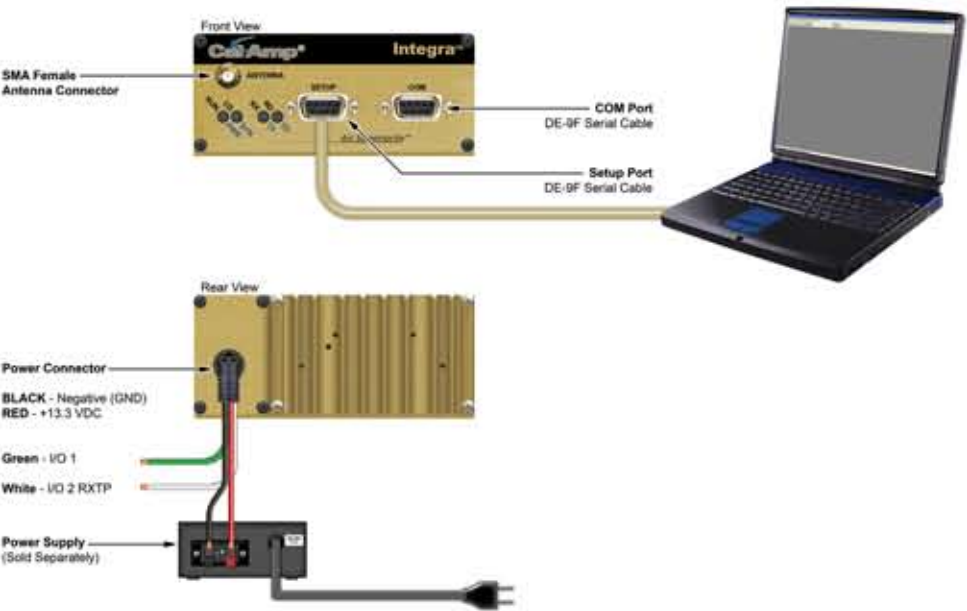
Setup and Configuration

It is easy to set up an Integra-TR network to verify basic unit operation and experiment with network designs and configurations. An RX/TX antenna is required for basic operation. It is important to use attenuation between all demo units to reduce the amount of signal strength in the test environment.



Device Connections

Refer to the diagram below for the proper device connections for basic operation.



Field Programming Software

The Integra-TR Field Programming Software (FPS) is the programming and diagnostics software for the Integra-TR wireless modem. The software allows the user to edit and program user programmable settings, interactively tune modem and RF parameters, and monitor diagnostic data from the Integra-TR.

Integra-TR FPS is available on the Start-Up CD-ROM as a .zip file shipped with this device. You may also visit the Download Library available from the Support Menu at [www.calamp.com](http://www.calamp.com) for the most current version available.

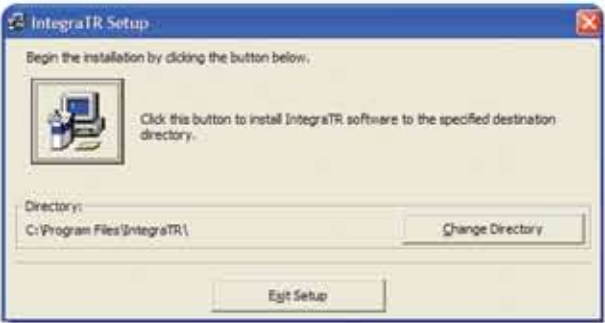
INSTALLING THE FPS

To use the software, you will need a PC with Windows 98 or later and at least one operational COM Port available.

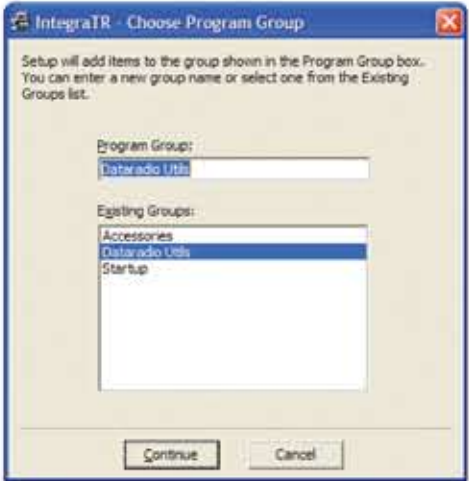
**STEP 1** Open the .zip file and double-click on the **setup.exe** application. After the application is extracted from the .zip file, you will be brought to the Integra-TR Setup screen. Click **OK** to begin.



**STEP 2** Click the image of the PC to install the software.



**STEP 3** The program will then be added to the folder name shown in the Program Group box, the default is **CalAmp Utils**. Click **Continue** to finish the install.



USING THE FPS

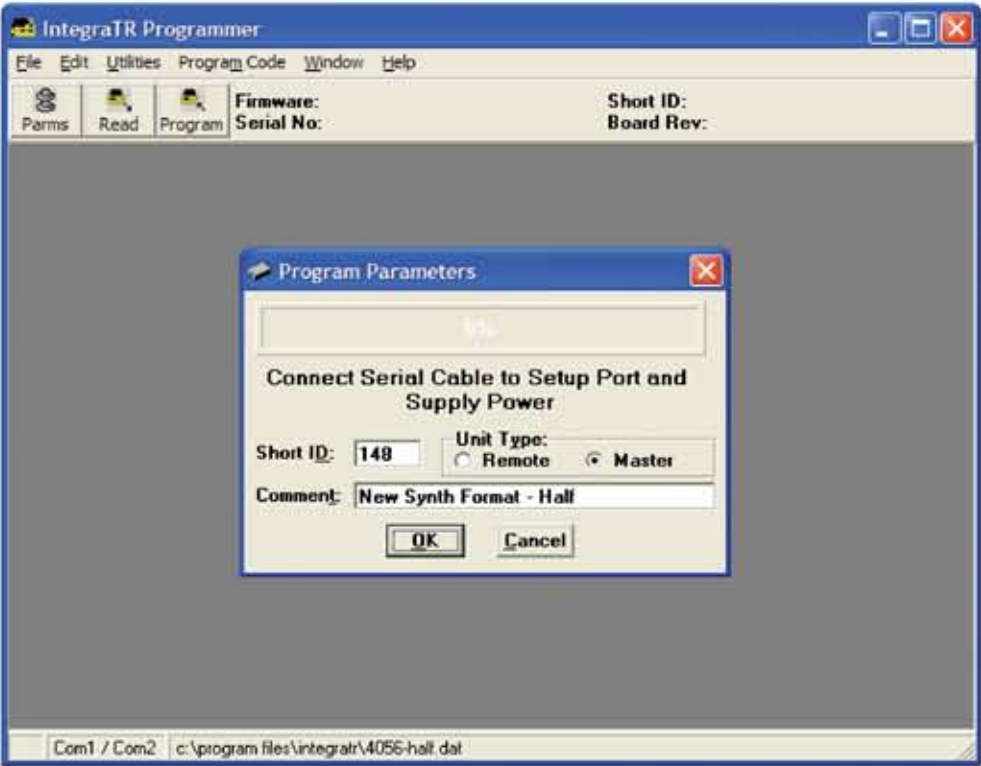
Make sure all connections are made as shown in the diagram and then power on the device.

**STEP 1** Locate the **CalAmp Utils** folder (or if you named the Program Group box differently during install) and select the **IntegraTR** application.

**STEP 2** Click the **Parms** button in the upper left corner of the FPS screen. Here the Modem, Com/Analog, Radio and Frequencies settings can be changed. Click **OK** when done.



**STEP 3** From the Integra-TR Programmer screen, click on the **Program** button in the upper left corner. This will bring up the Program Parameters screen and display the option to automatically configure the device as a Remote or Master. Click **OK**.



Your modem is now ready for use. For advanced network settings, please refer to the Integra-TR User Manual (PN 001-4008-100) provided, or in our online Download Library at [www.calamp.com](http://www.calamp.com).