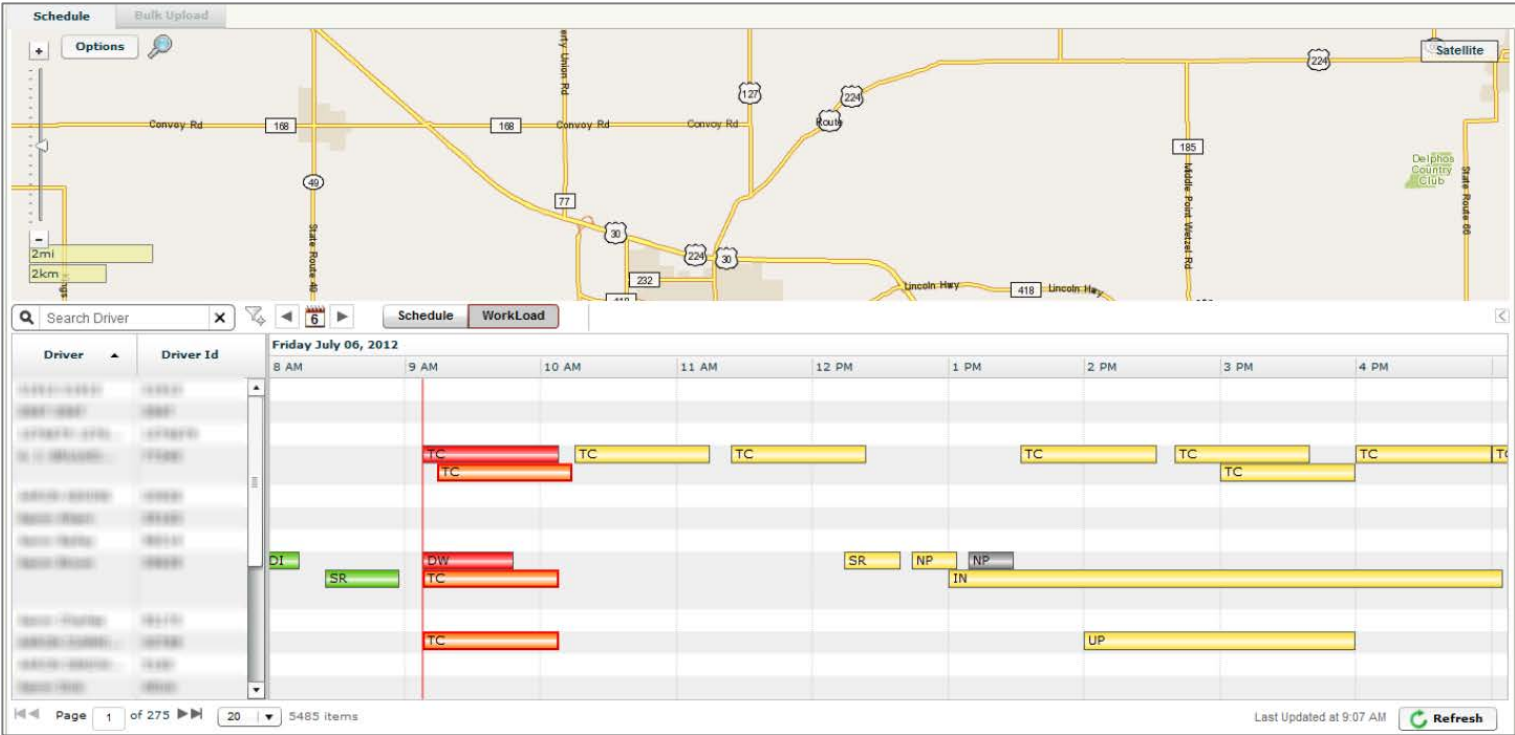


FleetOutlook®

TechDirect Gantt Chart Color Quick Guide



External - WFMS or Driver-Indicated Status			
		Incomplete	Departed
		Assigned – No Arrival Indicated by Driver	Job Completed – Indicated by Driver
FleetOutlook (GPS-Based) Status	Incomplete Assigned to a Driver, but No GPS-Based Arrival Status	<div></div>	<div></div>
		<div>Scheduled Start Passed</div>	
		<div>Commit in Jeopardy (15 min)</div>	
		<div>Commit Passed</div>	<div>Commit Passed</div>
	Arrived GPS-Based Arrival Status, but no Departure Status	<div></div>	<div></div>
	Departed GPS-Based Arrival Status and Departure Status	<div></div>	<div></div>
Unassigned Work Order Not Assigned to a Driver		<div></div>	
Landmark Indicates Time Spent Worksite Landmark		<div><div></div> Landmark Name</div>	
Note: If a Work Order is edited and <u>any of the following fields</u> are modified, any existing reported GPS-based Arrival and Departure Status indications are cleared: Location Driver Scheduled Start Time*			
*If the Scheduled Start Time is modified, but calendar date for the Work Order does not change, the reported GPS-based Arrival or Departure status is not cleared.			